



Using Anthropological Interview Skills in Clinical Rating for Psychiatric Research

Kyle W. West, MS, CCRC

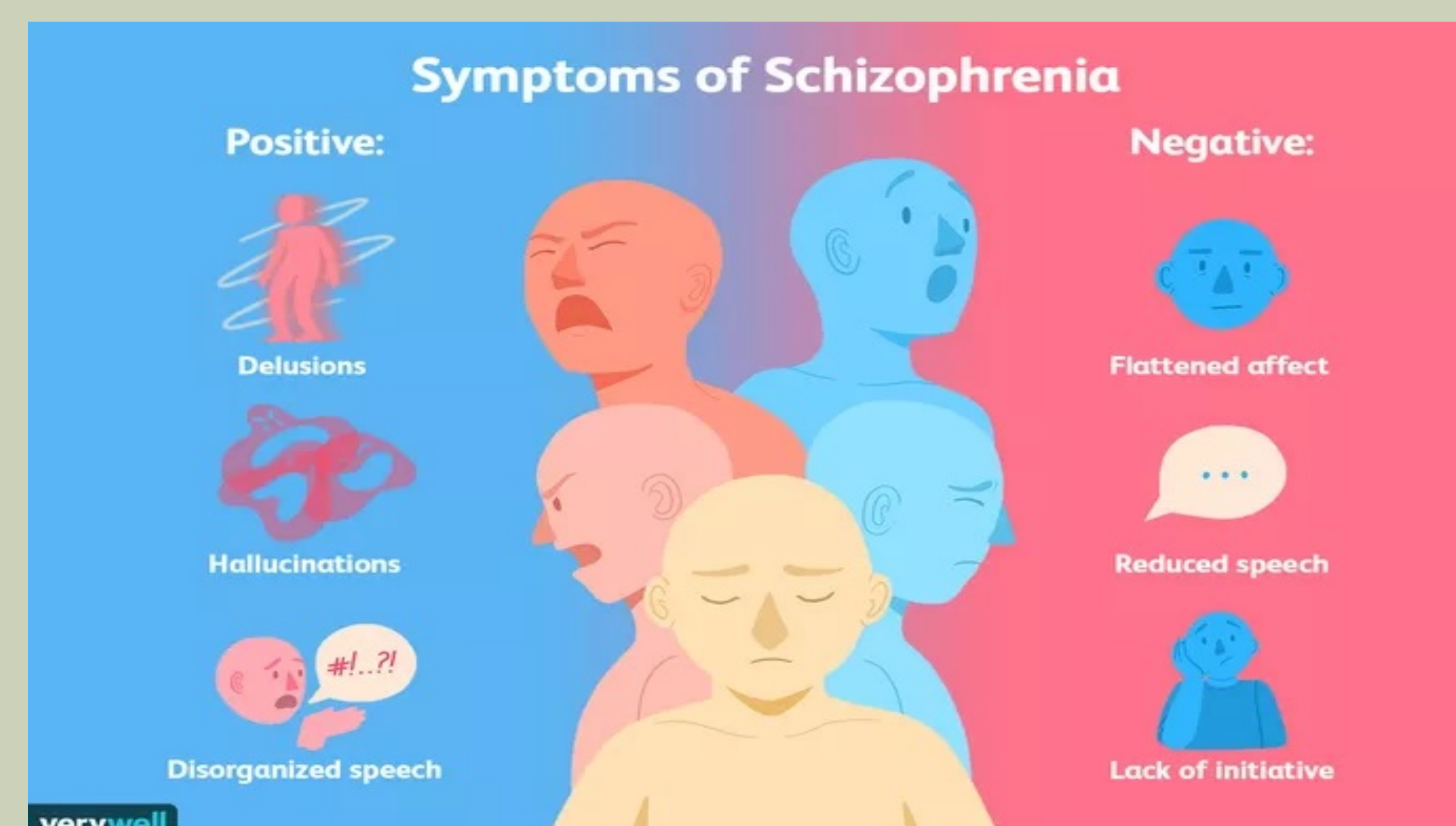


What I Do:

- Conduct semi-structured interviews to determine the diagnosis and severity of various mental health disorders
 - Use interviews to track any change in the subject's mental condition
 - These scales are the main endpoint by which the efficacy of experimental medications are judged
- Establish and maintain rapport with subjects diagnosed with a variety of mental health disorders
 - Body language – listening without judgment
 - Answer any questions to the subject's satisfaction
 - Ensure the subject is comfortable

How I Use Anthropology:

- Conduct interview with concern to both factual and conceptual bases
 - What do they see and how are the hallucinations interpreted?
 - Are hallucinations culturally appropriate?
 - If so, it may not be a psychotic feature
- Determine insight and judgment
 - Does the subject recognize the illness?
 - Does the subject recognize the seriousness of the condition?
 - How is the illness conceptualized?



Semi-Structured Interviews

- Mini-International Neuropsychiatric Interview (MINI)
 - Primary diagnostic tool in mental health
- Positive and Negative Syndrome Scale (PANSS)
 - Assesses severity of schizophrenia over three areas

•Other Semi-Structured Interviews

- Young Mania Rating Scale (YMRS)
- Columbia-Suicide Severity Rating Scale (C-SSRS)
- Hamilton Anxiety Rating Scale (HAM-A) & Hamilton Depression Rating Scale (HAM-D)
- Montgomery-Asberg Depression Rating Scale (MADRS)