

Applying Anthropology to support a Nonprofit Clinic

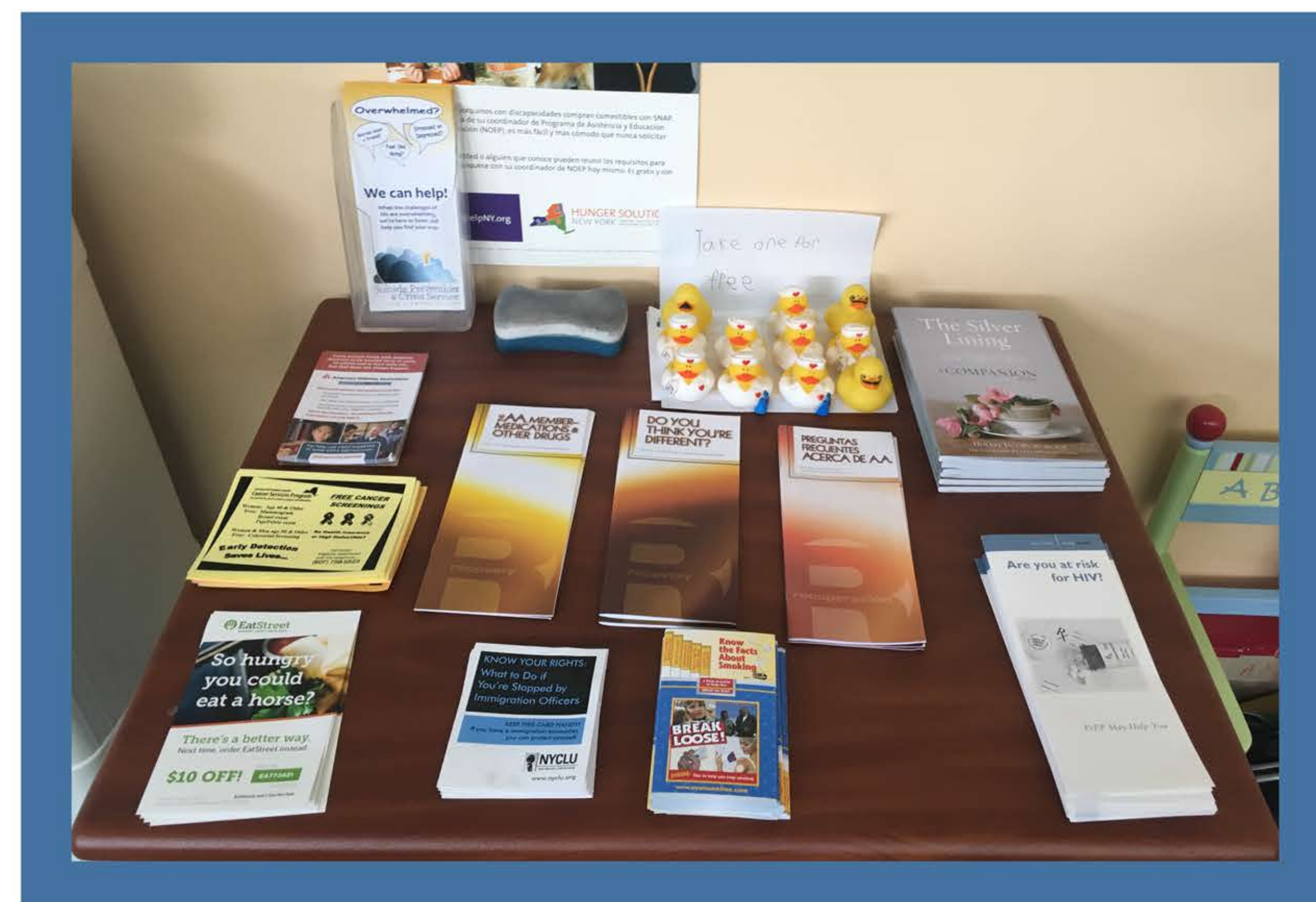
Emma Nalin, MS/MPH candidate

Research Site

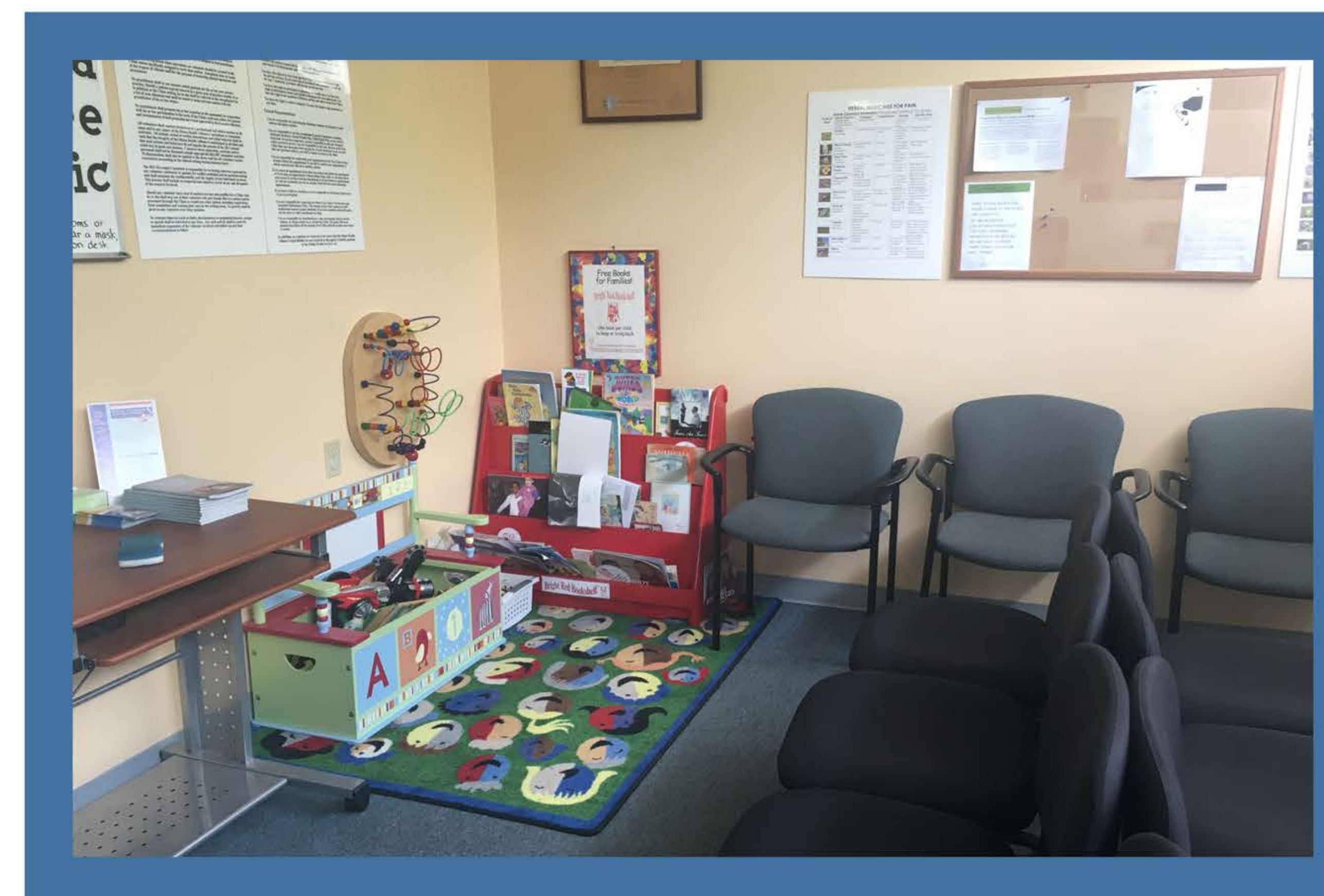
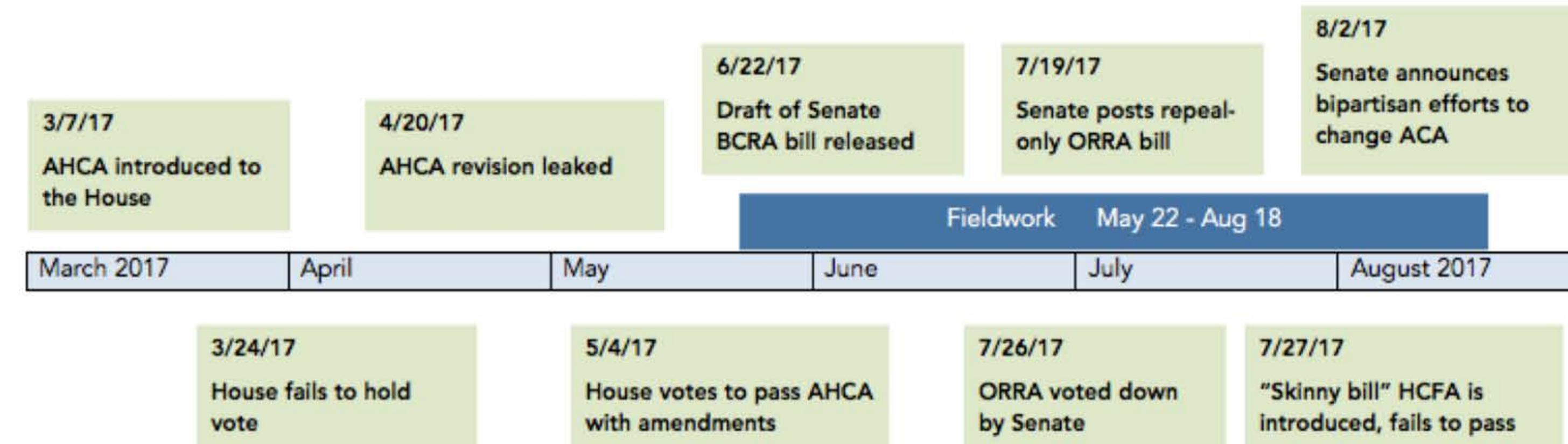
Fingerlakes Free Clinic*

- Free clinic for people without health insurance
- Biomedical and holistic services
- Funded by grants, staffed by volunteers
- "Healthcare is a Human Right."

*pseudonym



Political Context



I use anthropology to:

Build a positive client partnership

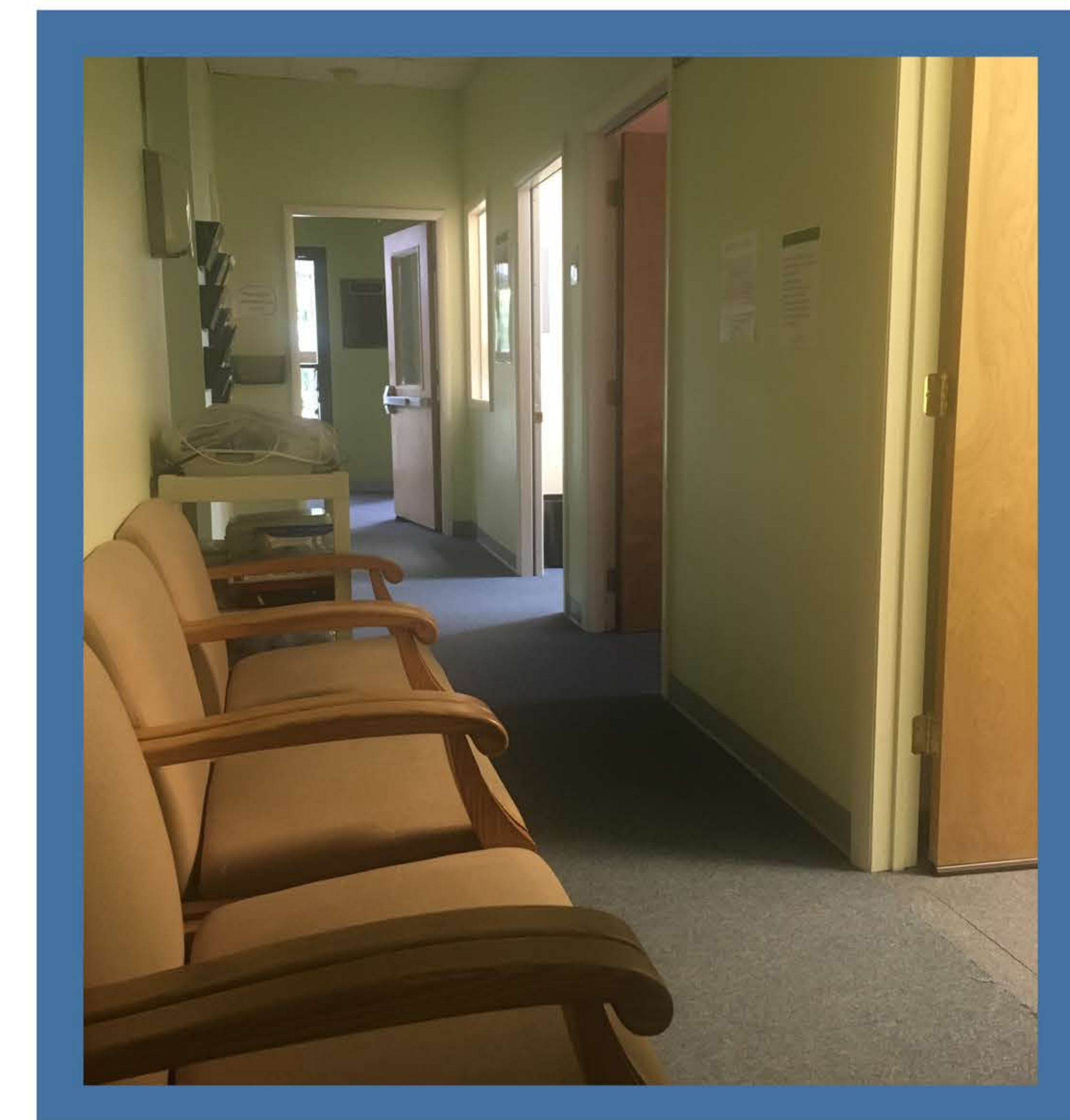
- Creating space for my work in the organizational structure
- Seeking buy-in from gatekeepers
- Adapting the project design and the final report to the clinic's emerging needs

Listen to donors' priorities

- Interviews, observations, and tours
- Acknowledging the political context
- Building ongoing relationships with people in the community

Deliverables

- 1-page executive summary
- 20-page client report
- 10-page report for participants



Communicate results effectively

- Translating among staff culture, board culture, and donor culture
- Writing concise, reasonable, actionable recommendations

Why go to graduate school?

- Collaborate with professionals on meaningful projects
- Gain skills for working with different types of data (and the confidence to use them!)
- Learn from colleagues with diverse backgrounds

What next?

- Seek employment in healthcare, nonprofits, user research, higher ed.
- Remain in contact with anthropologists while building a network in new fields

Contact Info

✉ EmmaNalin@my.unt.edu

in <https://www.linkedin.com/in/emma-nalin/>

🏠 Home base: Ithaca, NY